

# JZ10-11-T40V

## Jazz™ Micro-OPLC™ Installation Guide

16 Digital, 2 Analog/Digital, 2 Analog Inputs,  
20 Transistor Outputs

- Before using this product, the user must read and understand this document.
- For additional information regarding this product, refer to the user guide and technical specifications.
- All examples and diagrams are intended to aid understanding, and do not guarantee operation. Unitronics accepts no responsibility for actual use of this product based on these examples.
- Please dispose of this product according to local and national standards and regulations.
- Only qualified service personnel should open this device or carry out repairs.



Failure to comply with appropriate safety guidelines can cause severe injury or property damage.



- Do not attempt to use this device with parameters that exceed permissible levels.
- To avoid damaging the system, do not connect/disconnect the device when power is on.

## Environmental Considerations



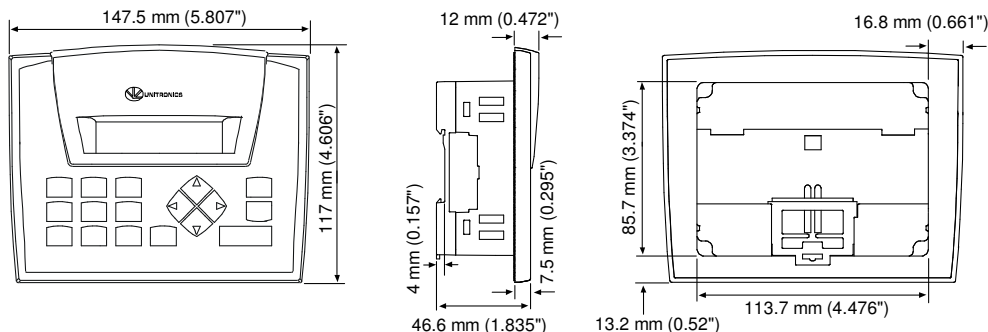
- Do not install in areas with: excessive or conductive dust, corrosive or flammable gas, moisture or rain, excessive heat, regular impact shocks or excessive vibration.



- Ventilation: 10mm space required between the controller's top/bottom edges & enclosure walls.
- Do not place in water or let water leak onto the unit.
- Do not allow debris to fall inside the unit during installation.

## Mounting

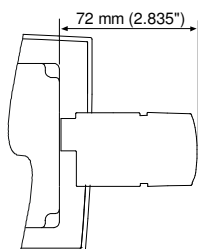
### Dimensions



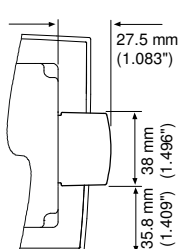
### Add-on modules

**Note:** Installing an add-on module requires space.

#### During installation

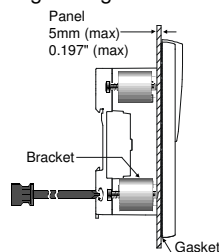


#### After installation



### Panel mounting

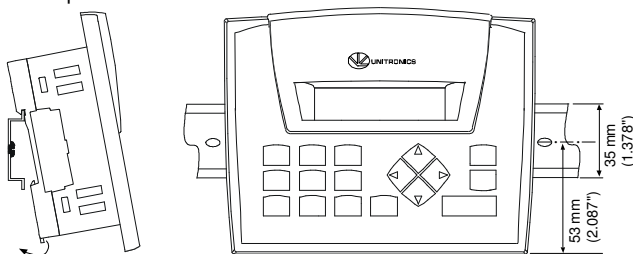
- Cut-out: 117 x 89mm (WxH) 4.606"x 3.504"
- Hold bracket against unit while tightening screw



## DIN-rail mounting

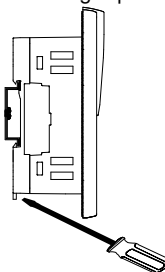
### Mounting

Snap PLC onto the DIN rail



### Removal

Push mounting clip down



**Note:** Removing the unit requires clearance space. Recommendation: approximately 40mm (1.58").

## Wiring

**Note:** All diagrams are based on the rear view of the OPLC.



- Do not touch live wires.



- Install an external circuit breaker. Guard against short-circuiting in external wiring.
- Use appropriate circuit protection devices.
- Unused pins should not be connected. Ignoring this directive may damage the device.
- Double-check all wiring before turning on the power supply.

- To avoid damaging the wire, do not exceed a maximum torque of 0.5 N·m (5 kgf·cm).
- Do not use tin, solder, or any substance on stripped wire that might cause the wire strand to break.
- Install at maximum distance from high-voltage cables and power equipment.

Use crimp terminals for wiring; use 26-12 AWG wire (0.13 mm<sup>2</sup>–3.31 mm<sup>2</sup>).

- Strip the wire to a length of 7±0.5mm (0.250–0.300 inches).
- Unscrew the terminal to its widest position before inserting a wire.
- Insert the wire completely into the terminal to ensure a proper connection.
- Tighten enough to keep the wire from pulling free.

- Input or output cables should not be run through the same multi-core cable or share the same wire.
- Allow for voltage drop and noise interference with input lines used over an extended distance. Use wire that is properly sized for the load.
- The controller, I/O signals, and outputs' power supply must be connected to the same 0V signal.

## Inputs

This model comprises a total of 20 inputs in 3 groups.

- I0 to I15 are digital inputs. They may be wired, in a group, as either npn or pnp.
- I16 and I17 may be wired as either digital or analog inputs. These may be wired as either:
  - nnp digital inputs
  - pnp digital inputs
  - analog (voltage) inputs

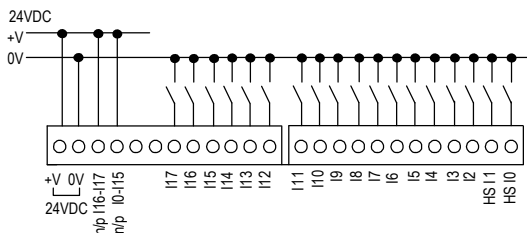
In addition, 1 input may be wired as a pnp input, while the other is wired as an analog input. Note that if 1 input is wired as an npn input, the other may not be wired as an analog input.

- AN0 and AN1 are analog (current) inputs that may be wired using 2, 3, or 4 wires.

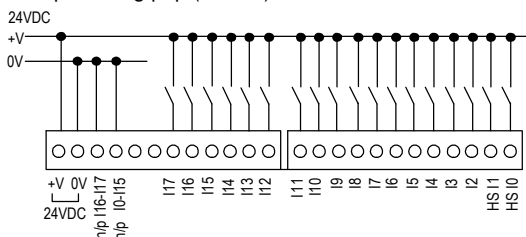
## Digital Inputs, Controller's Power Supply

**Note:** The inputs are arranged in two groups. You can wire one group as npn and the other as pnp, or wire both groups as npn, or as pnp. In either case, the npn/pnp pins **must be connected**.

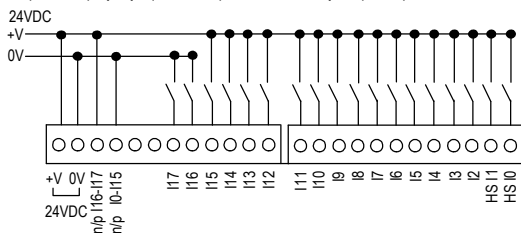
Input wiring, npn (sink)



Input wiring pnp (source)



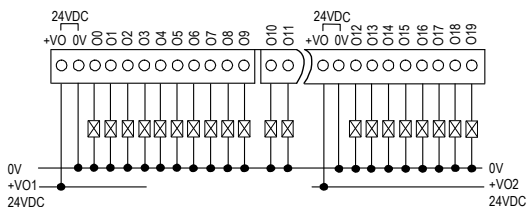
Input wiring  
(I0-I15), pnp (source), I16-I17, npn (sink)



## Digital Outputs, Outputs' Power Supply

+V01 is the power supply for outputs O0–O11.

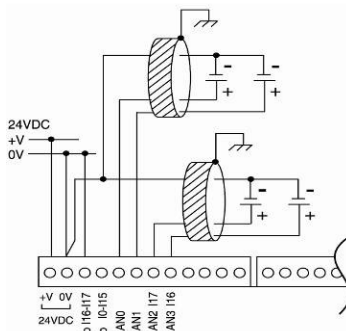
+V02 is the power supply for outputs O12 –O19.



## Analog Inputs

Analog Input wiring, voltage, AN0 - AN3

**Note:** If either I16 or I17 is wired as an npn digital input, the remaining input cannot be wired as an analog input, In any case AN0-AN1 can be used.



**KLINKMANN**

### Helsinki

tel. +358 9 540 4940  
automation@klinkmann.fi

### St. Petersburg

tel. +7 812 327 3752  
klinkmann@klinkmann.spb.ru

### Moscow

tel. +7 495 641 1616  
moscow@klinkmann.spb.ru

### Yekaterinburg

tel. +7 343 287 19 19  
yekaterinburg@klinkmann.spb.ru

### Samara

tel. +7 846 273 95 85  
samara@klinkmann.spb.ru

### Kiev

tel. +38 044 495 33 40  
klinkmann@klinkmann.kiev.ua

### Riga

tel. +371 6738 1617  
klinkmann@klinkmann.lv

### Vilnius

tel. +370 5 215 1646  
post@klinkmann.lt

### Tallinn

tel. +372 668 4500  
klinkmann.est@klinkmann.ee

### Minsk

tel. +375 17 200 0876  
minsk@klinkmann.com